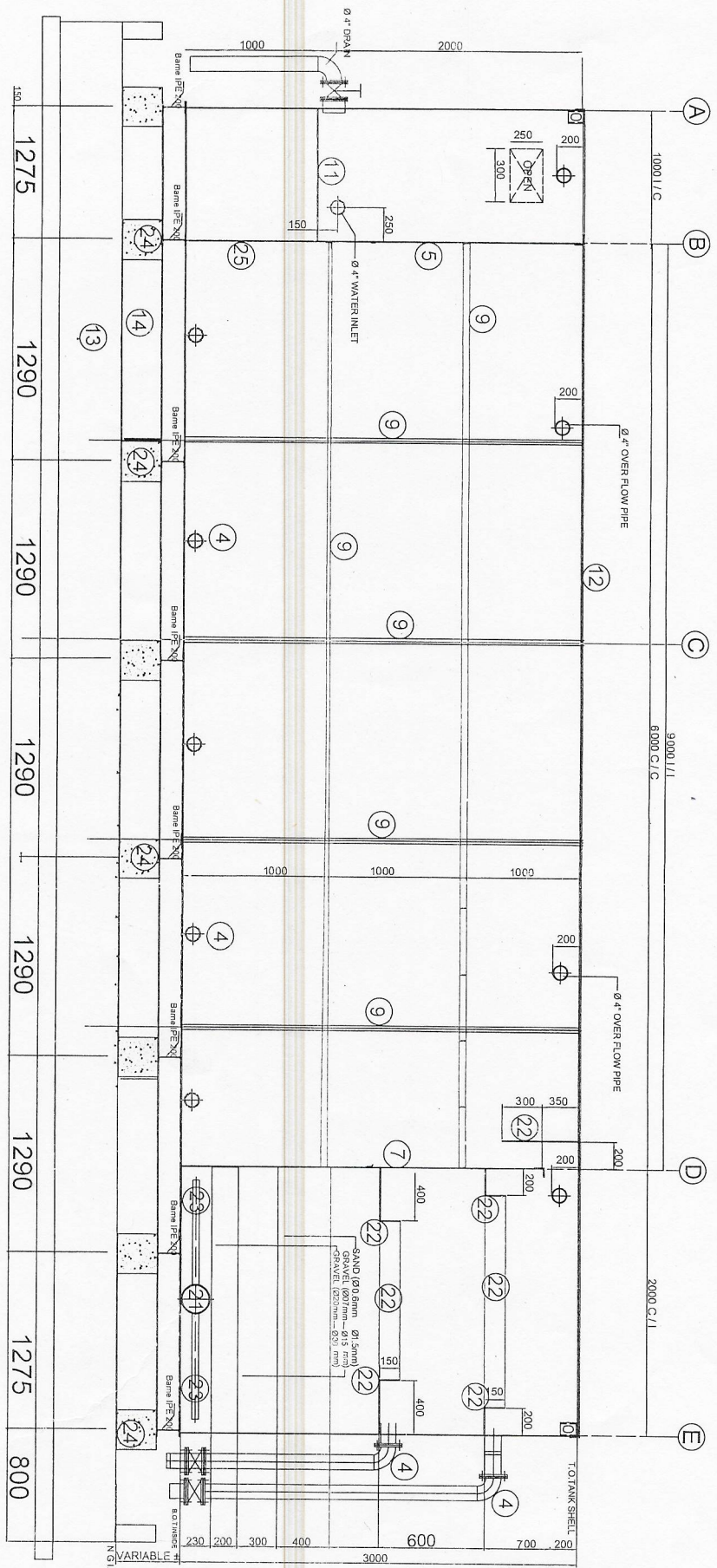


NOTES:
 1. ALL DIMENSIONS ARE IN MM, UNLESS OTHERWISE NOTED.
 2. DIMENSIONS IN PARENTHESIS ARE FOR REFERENCE ONLY.
 3. USE FIGURED DIMENSIONS, IF COLIST ASK.
 4. WELDING SHALL BE IN ACCORDANCE WITH ASSAWS STANDARDS



SECTION VIEW A - A

MATERIALS PARTS LIST

MARK	NAME	DESCRIPTION	MARK	DESCRIPTION
1	TANK SHELL	6mm THK. x 3000 x 8000 P.L.T.	13	R.C SLAB BASE
2	TANK SHELL	6mm THK. x 3000 x 3000 P.L.T.	14	DRAIN CHANNEl
3	OVER FLOW PIPE	PNS Ø x 89mm STD	15	PIPE SPOOL
4	DRAIN PIPE	PNS Ø x 89mm STD	16	VALVE
5	SHELL PARTITION P.L.T.	6mm THK. x 2000 x 3000 P.L.T.	17	PIPE SPOOL
6	SHELL PARTITION P.L.T.	6mm THK. x 1000 x 2000 P.L.T.	18	FLANGE
7	SHELL PARTITION P.L.T.	6mm THK. x 3000 x 3000 P.L.T.	19	BAME PE 180
8	SHELL PARTITION P.L.T.	6mm THK. x 1000 x 1600 P.L.T.	20	PIPE ELBOW
9	ANGULAR SUPPORT	6mm x 75 x 75 ANGLE BARS	21	MANIFOLD PIPE
10	SHEI BAKLAVA P.L.T.	3 mm THK. P.L.T.	22	SHELL PARTITION P.L.T.
11	SHELL Base P.L.T.	6mm THK. x 8000 x 3000 P.L.T.	23	LATERAL PIPE
12	SHELL RING	6mm x 75 x 75 ANGLE BARS	24	R.C BEAM BASE
			25	BEAM/PE 200

REV. NO.	REVISED BY	DESCRIPTION	DATE

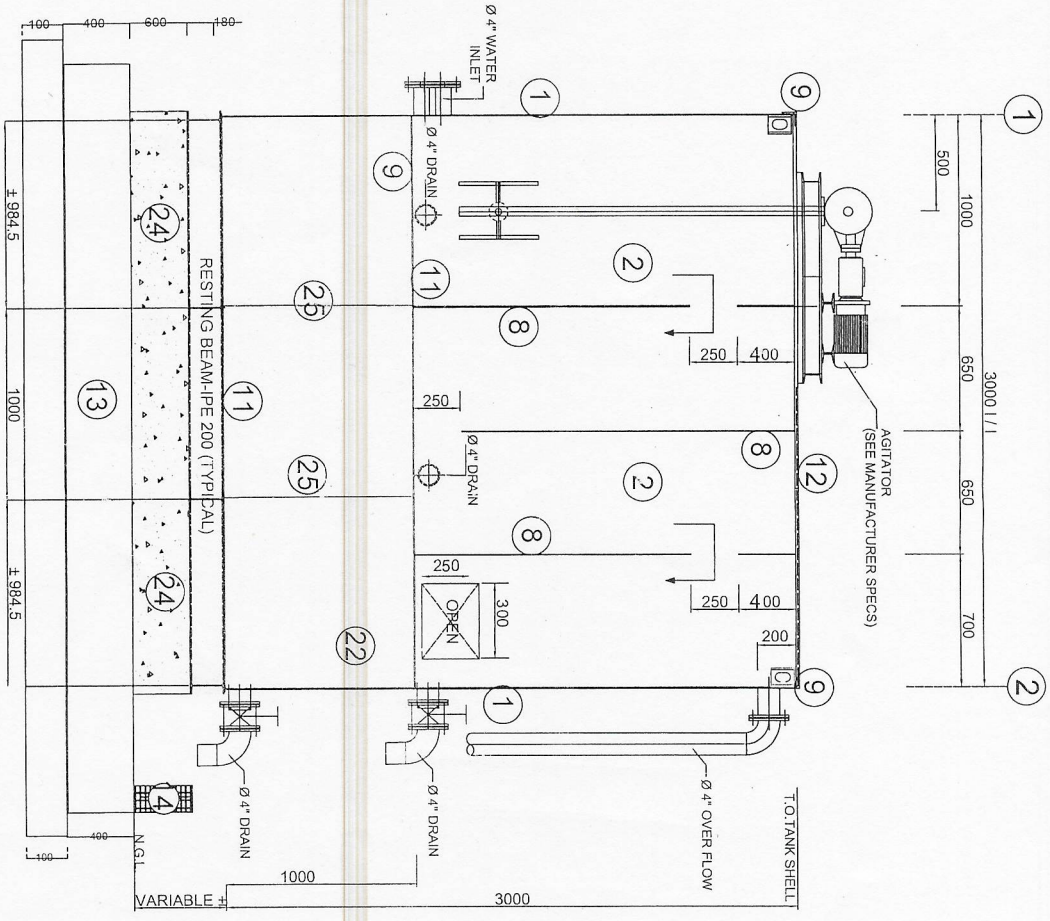
FOR APPROVAL FOR INFORMATION FOR FABRICATION FOR TENDER FOR CONSTRUCTION

CLIENT: WATER CORPORATION
 PROJECT & RESEARCH MANAGEMENT
 WATER TREATMENT PLANT - Capacity 600 m3 / day
 SECTION VIEW A - A

DATE: 5-12-2022
 DWG NO. WTP-600

APPROVED: [Signature]
 REF. DWG. NO. [Blank]

NOTES:
 1. ALL DIMENSIONS ARE IN MM, UNLESS OTHERWISE NOTED.
 2. REMOVE ALL BURRS AND SHARP EDGES.
 3. WELDING SHALL BE IN ACCORDANCE WITH ASIANW STANDARDS.
 4. WELDING SHALL BE IN ACCORDANCE WITH ASIANW STANDARDS.



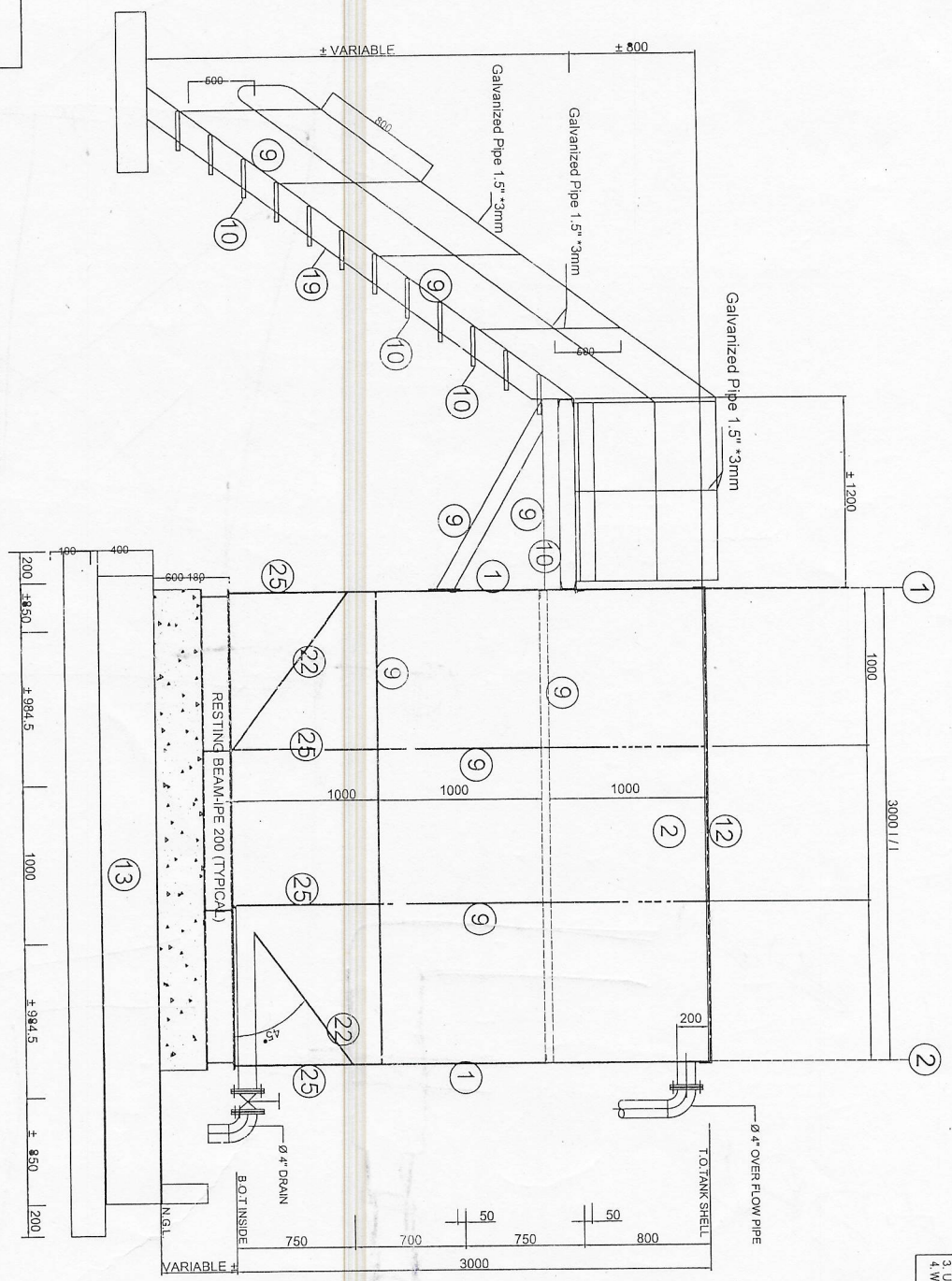
SECTION VIEW B-B

MATERIALS PARTS LIST

MARK	NAME	DESCRIPTION	QTY
1	TANK SHELL	6mm THK. X 3000 X 9000 P.L.T	1
2	TANK SHELL	6mm THK. X 3000 X 9000 P.L.T.	1
3	OVER FLOW PIPE	PNS Ø x 89mm STD	1
4	DRAIN PIPE	PNS Ø x 89mm STD	1
5	SHELL PARTITION P.L.T	6mm THK. X 2000 X 3000 P.L.T.	1
6	SHELL PARTITION P.L.T	6mm THK. X 2000 X 3000 P.L.T.	1
7	SHELL PARTITION P.L.T	6mm THK. X 3000 X 3000 P.L.T	1
8	MANIFOLD	6mm THK. X 240 P.C.D. X 100 P.C.D.	1
9	MANIFOLD	6mm THK. X 240 P.C.D. X 100 P.C.D.	1
10	MANIFOLD	6mm THK. X 240 P.C.D. X 100 P.C.D.	1
11	MANIFOLD	6mm THK. X 240 P.C.D. X 100 P.C.D.	1
12	SHELL RING	6mm x 75 x 75 ANGLE BARS	25

REVISION	REVISION	REVISION	REVISION
FOR ABBREVIATION	FOR INFORMATION	FOR FABRICATION	FOR TENDER
DATE	DATE	DATE	DATE
5-12-2002			
DRAWN	DRAWN	DRAWN	DRAWN
CHECKED	CHECKED	CHECKED	CHECKED
APPROVED	APPROVED	APPROVED	APPROVED
WATER CORPORATION PROJECT & RESEARCH MANAGEMENT WATER TREATMENT PLANT - Capacity 600 m ³ / day SECTION VIEW B-B			
TITLE	DATE	DWG NO.	REF DWG. NO.
	5-12-2002	WTP-600	

- NOTES:
1. ALL DIMENSIONS ARE IN MM, UNLESS OTHERWISE NOTED
 2. REMOVED ALL BURRS AND SHARP EDGES.
 3. USE FIGURED DIMENSIONS, IF DOUBT ASK
 4. WELDING SHALL BE IN ACCORDANCE WITH ANSIS/ASME STANDARDS.



SECTION VIEW D-D

MATERIALS PARTS LIST

MARK	NAME	DESCRIPTION	QTY	UNIT
1	TANK SHELL	6mm THK. X 3000 X 9000 P.L.T.	1	NO.
2	TANK SHELL	6mm THK. X 3000 X 3000 P.L.T.	1	NO.
3	OVER FLOW PIPE	PNS Ø x 89mm, STD	1	NO.
4	DRAIN PIPE	PNS Ø x 89mm, STD	1	NO.
5	SHELL PARTITION P.L.T.	6mm THK. X 2000 X 3000 P.L.T.	1	NO.
6	SHELL PARTITION P.L.T.	6mm THK. X 3000 X 3000 P.L.T.	1	NO.
7	SHELL PARTITION P.L.T.	6mm THK. X 3000 X 3000 P.L.T.	1	NO.
8	MANIFOLD PIPES	6mm THK. X 2000mm STD	1	NO.
9	MANIFOLD PIPES	6mm THK. P.L.T.	1	NO.
10	MANIFOLD PIPES	PNS Ø x 50mm Upvc	1	NO.
11	8mm Thick Bars	8mm x 75 x 75 ANGLE BARS	1	NO.
12	SHELL RING	6mm x 75 x 75 ANGLE BARS	1	NO.
13	R/C SLAB BASE	12 m x 6m x 0.4 m	1	NO.
14	DRAIN CHANNEL	40 m x 0.6m x 0.2 m	1	NO.
15	PIPE SPOOL	PNS Ø x 89mm, STD	1	NO.
16	VALVE	Gate Valve - PN 10 x 89mm	1	NO.
17	PIPE SPOOL	PNS Ø x 89mm, STD	1	NO.
18	FLANGE	15mm THK. X 279 O.D. X 240 P.C.D	1	NO.
19	BAM PIPE	6mm x 180 x 90	1	NO.
20	PIPE ELBOW	5mm THK. X 279 O.D. X 240 P.C.D. X 180 A.D.	1	NO.
21	MANIFOLD PIPE	PNS Ø x 200mm STD	1	NO.
22	SHELL PARTITION P.L.T.	6mm THK. P.L.T.	1	NO.
23	LATERAL PIPE	PNS Ø x 50mm Upvc	1	NO.
24	CONCRETE BASE	3 m x 0.6m x 0.3 m	1	NO.
25	BAM BASE PIPE	200 Ø x 100 mm x 7.5mm	1	NO.

REVISED BY	DESCRIPTION	DATE
FOR APPROVAL	FOR INFORMATION	FOR FABRICATION
FOR TENDER	FOR CONSTRUCTION	

CLIENT: WATER CORPORATION
 PROJECT & RESEARCH MANAGEMENT
 WATER TREATMENT PLANT - Capacity 600 m3 / day
 SECTION VIEW D - D

DATE: 5-12-2022
 DWG NO: WTP-600
 SCALE: NTS
 REF. DWG. NO.